

# Venues for Hire

Walsall and Darlaston  
Town Halls



Walsall Council



# Walsall Town Hall

**Lichfield Street, Walsall WS1 1SE**

*Access through Leicester Street entrance*

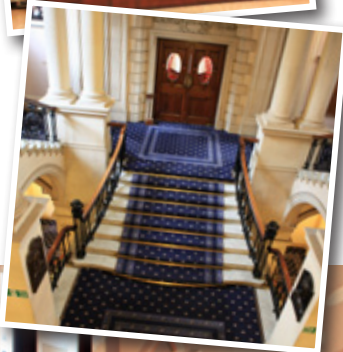
This Edwardian town hall was opened in 1902 and is located in the heart of Walsall town centre. There is a small car park with 15 parking spaces at the front. Walsall Town Hall is a large hall with a stage, organ, two dressing rooms, two small facility rooms, lounge bar and PA system.

The venue is ideal for dances, concerts, boxing/wrestling, award ceremonies, work shops/exhibitions, parties and wedding receptions.

## Capacities:

Sit down meal/buffet	
with dance floor	approximately 420
Seated audience	approximately 700
Balcony	approximately 175

The above capacities are dependent upon the event requirements.





# Darlaston Town Hall

Victoria Road, Darlaston WS10 8AA

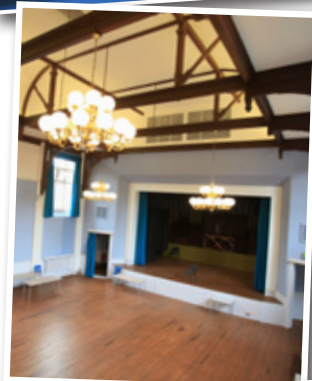
This Victorian town hall was opened in 1888 and is locally listed. It is located in the heart of Darlaston town centre which is a conservation area. There is a small public car park at the rear of the town hall with 20 parking spaces. The town hall underwent a refurbishment in April 2008 but has continued to keep its Victorian appearance. Darlaston Town Hall facilities consist of a hall with a stage, organ, two small facility rooms, council chamber, kitchen, lounge bar and PA system.

The venue is ideal for dances, concerts, boxing/wrestling, award ceremonies, work shops/exhibitions, proms, parties and wedding.

## Capacities:

Sit down meal/buffet  
with dance floor    approximately 204  
Seated audience    approximately 270  
Balcony                approximately 120

The above capacities are dependent upon the event requirements.



# General Information

The Council's catering service can be contacted on 01922 653210 if you wish to make your catering arrangements through them.

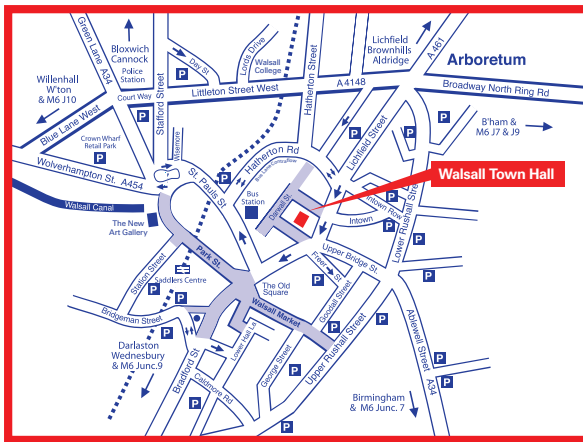
## Catering Facilities

Walsall Council does not have any restrictions. As a hirer you may use any catering company as long as they have the relevant food hygiene certificates.

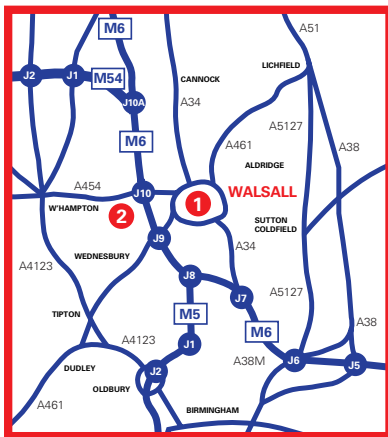
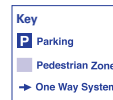
## Bar Facilities

The bars at Walsall and Darlaston Town Halls are operated by an external contractor, and currently offer both a full cash paying bar and a pre-paid option.

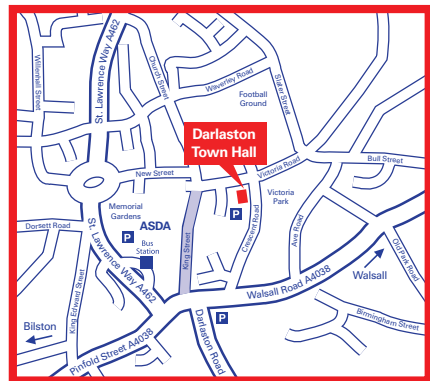
### 1 Walsall Town Hall



## Town Hall Locations



### 2 Darlaston Town Hall



Designed and printed by Walsall Council Print and Design Unit. Email: [printanddesign@walsall.gov.uk](mailto:printanddesign@walsall.gov.uk) Telephone: 01922 653223.

For further information please contact: Leisure & Community Health, Venue Development Team, 6th Floor Tameway Tower, 48 Bridge Street, Walsall WS1 1JZ. Telephone 0845 111 2900 or e-mail [bookings@walsall.gov.uk](mailto:bookings@walsall.gov.uk)